



THE INFINITY COLLECTION

standard palette volume II

Gaskell Mackay Carpets Ltd presents a unique portfolio of axminster designs....

the infinity collection standard palette vol II

Gaskell Mackay Carpets Ltd re-introduce the very first palette and bring it up to date with six new fashion colours for the discerning designer.

*Paprika, Maize, Turquoise, Delphinium, Ink & Jade
have been replaced with
Mocha, Driftwood, Sage, Lime, Amethyst & Petrol.*

We hope you enjoy the refreshed colour palette and brochure which includes new designs to inspire and accentuate the feature colours.

	Black		Grey
	Hemp		Viridian
	Crimson		Claret
	Nutmeg		Rust
	Sand		Driftwood
	Amethyst		Mocha
	Lime		Sage
	Petrol		Peacock

Due to limitations of the printing process, we are unable to guarantee an exact colour reproduction of these designs.

To obtain a more accurate representation, please use the Infinity Standard tuft box.

The designs are the copyright of Gaskell Mackay Carpets Ltd. and may not be reproduced without their written permission.

Due to the limitations of the printing process, we are unable to guarantee an exact colour reproduction of these designs. Gaskell Mackay reserve the right to change any of the specifications without prior notice. E. & O. E.
Copyright Gaskell Mackay Carpets Ltd. 2008.



Gaskell Mackay Carpets Ltd

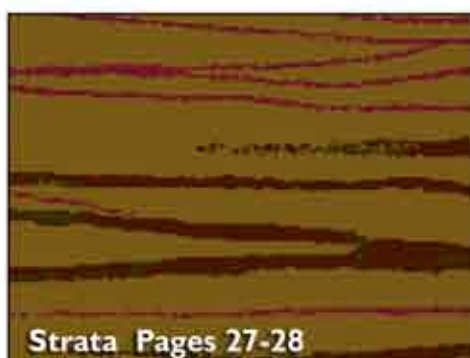
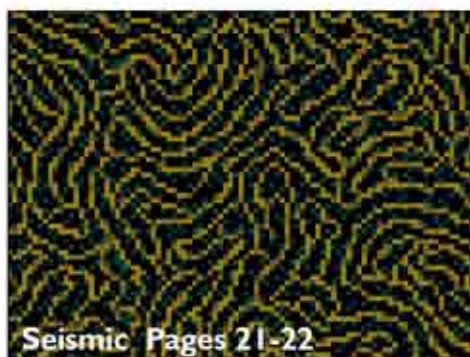
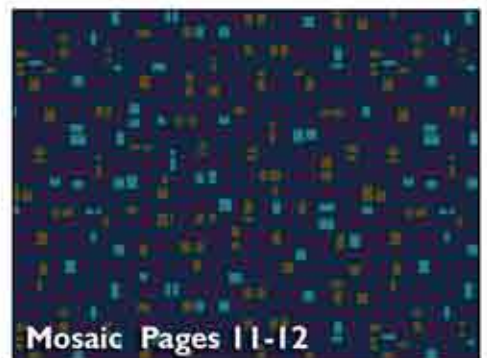
View Logistics, Park View Road East,
Hartlepool, TS25 1PG

Tel: 01429 892525 Fax: 01429 892530

Email: info@gaskell.co.uk Web: www.gaskell.co.uk

Co. Reg. 5781556 VAT No. GB 880 3218 32

Contents



infinity ∞



bambusa



bambusa

122cm (48")
straight match repeat

- | | |
|-------------|--------------|
| 1. Mocha | 001/M176177F |
| 2. Black | 002/M176177F |
| 3. Claret | 003/M176177F |
| 4. Sage | 004/M176177F |
| 5. Nutmeg | 005/M176177F |
| 6. Peacock | 006/M176177F |
| 7. Viridian | 007/M176177F |
| 8. Rust | 008/M176177F |

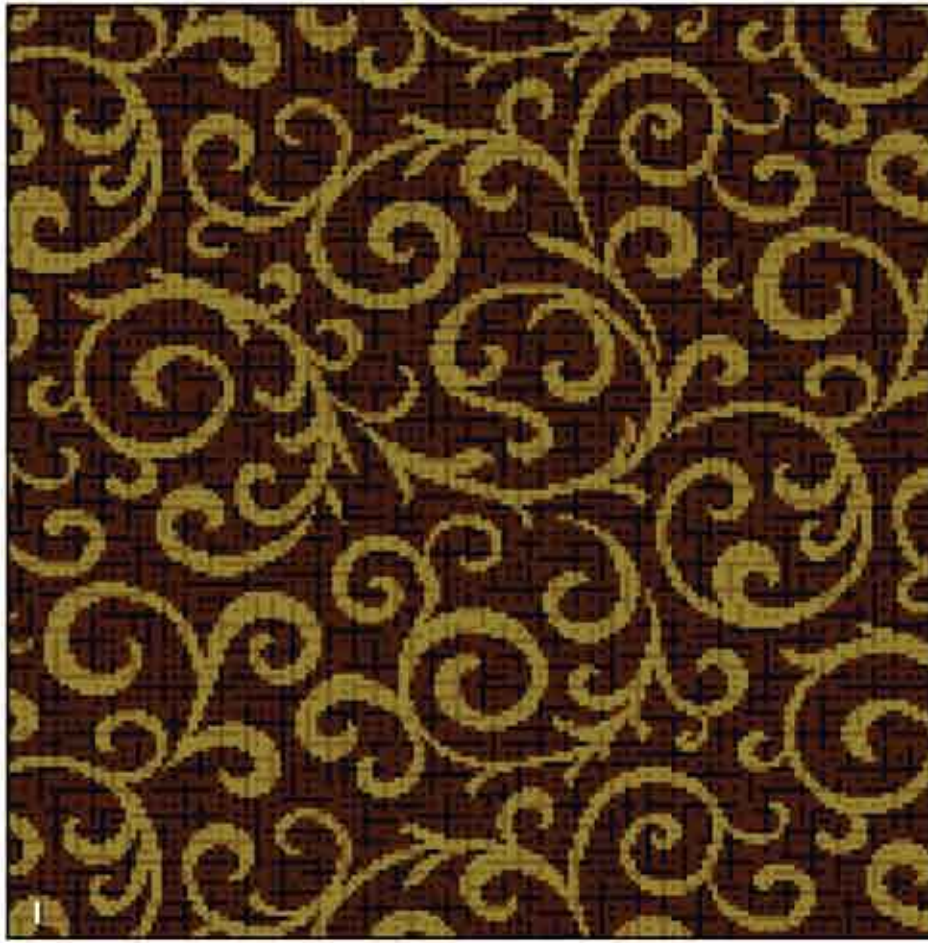


bambusa

infinity ∞



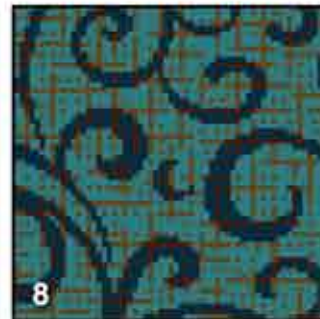
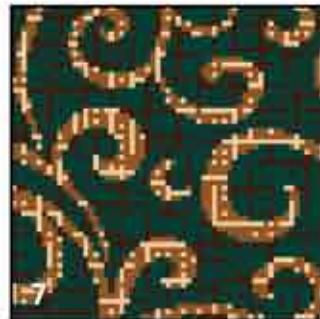
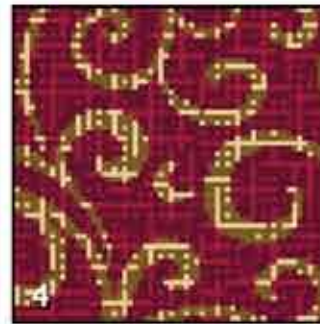
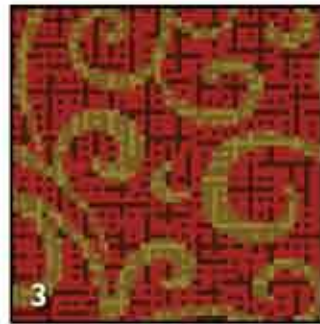
bracken



bracken

50cm (19.71")
straight match repeat

- | | |
|-------------|--------------|
| 1. Mocha | 001/M168677F |
| 2. Sand | 002/M168677F |
| 3. Rust | 003/M168677F |
| 4. Claret | 004/M168677F |
| 5. Black | 005/M168677F |
| 6. Amethyst | 006/M168677F |
| 7. Viridian | 007/M168677F |
| 8. Petrol | 008/M168677F |



bracken

infinity ∞



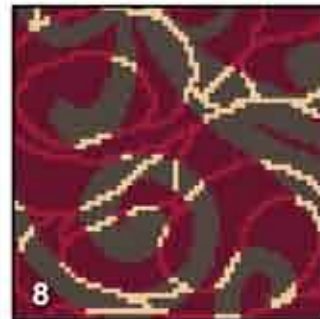
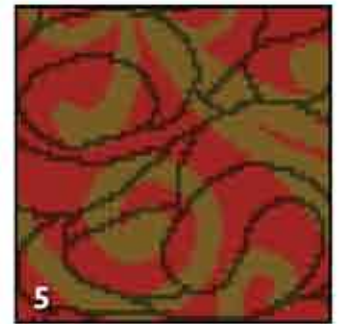
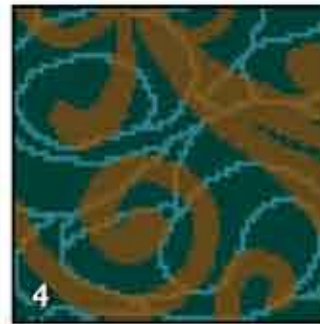
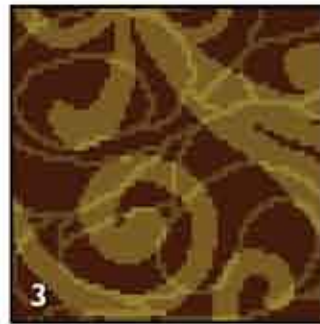
gazebo

gazebo

100cm (39.42")

straight match repeat

- | | |
|-------------|--------------|
| 1. Petrol | 001/M175077F |
| 2. Black | 002/M175077F |
| 3. Mocha | 003/M175077F |
| 4. Viridian | 004/M175077F |
| 5. Rust | 005/M175077F |
| 6. Sand | 006/M175077F |
| 7. Amethyst | 007/M175077F |
| 8. Claret | 008/M175077F |

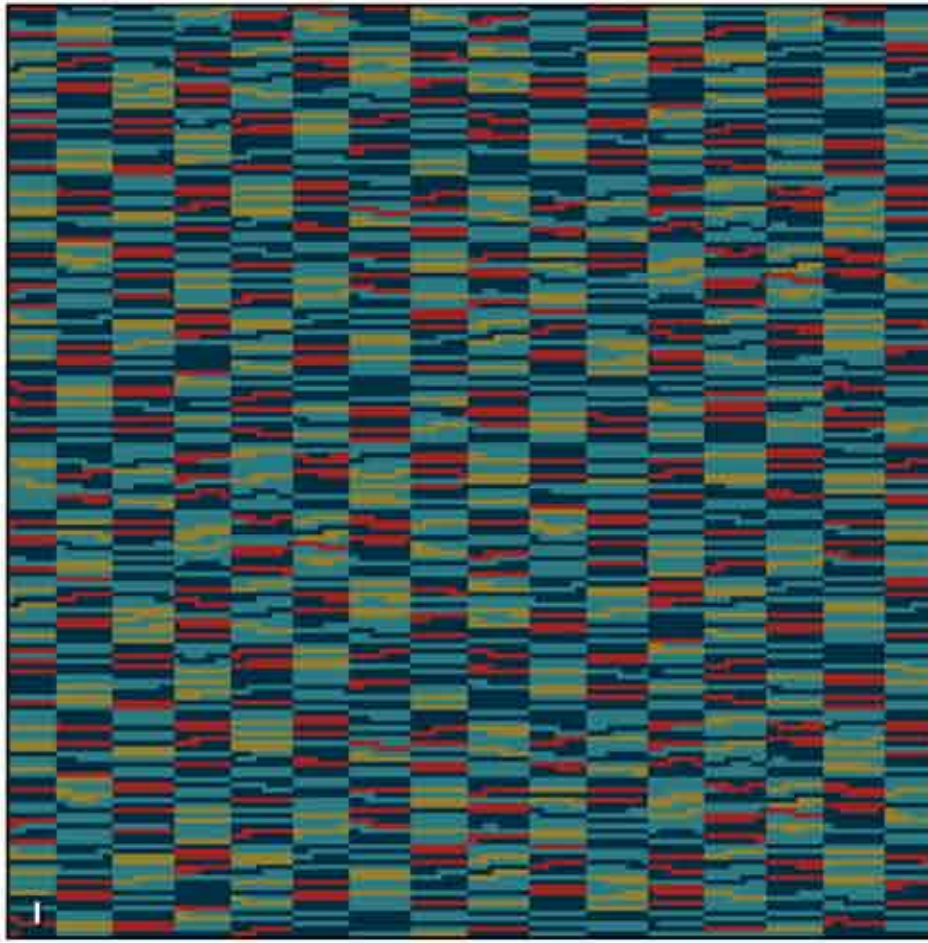


gazebo

infinity ∞



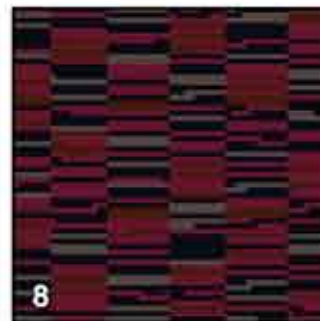
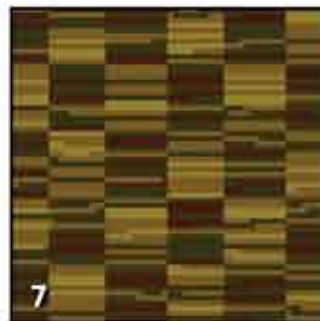
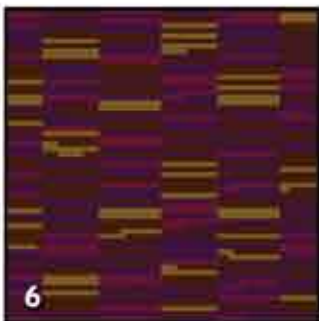
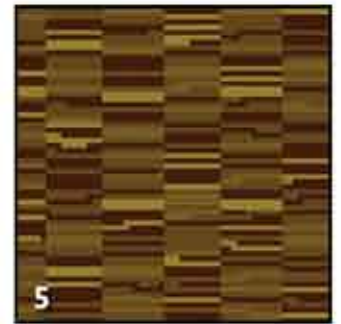
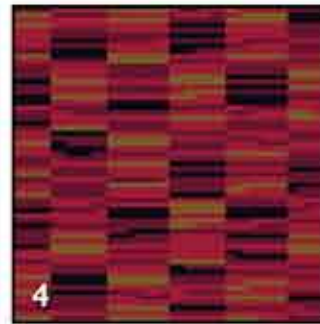
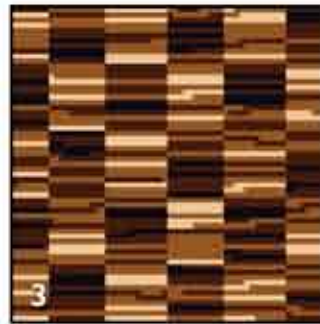
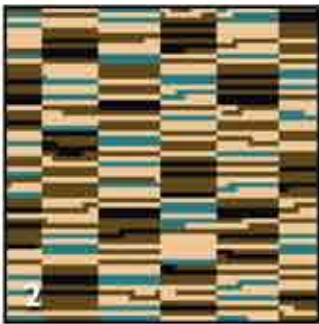
horizon



horizon

37.7cm (14.86")
straight match repeat

- | | |
|--------------|--------------|
| 1. Peacock | 001/M174877F |
| 2. Sand | 002/M174877F |
| 3. Nutmeg | 003/M174877F |
| 4. Crimson | 004/M174877F |
| 5. Driftwood | 005/M174877F |
| 6. Amethyst | 006/M174877F |
| 7. Sage | 007/M174877F |
| 8. Black | 008/M174877F |



horizon

infinity ∞



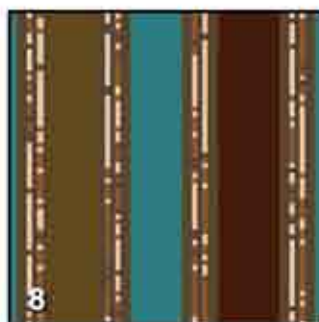
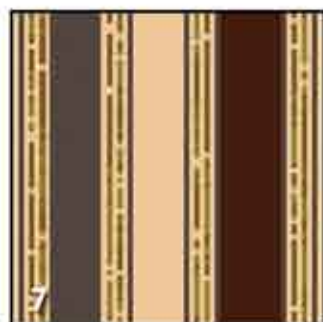
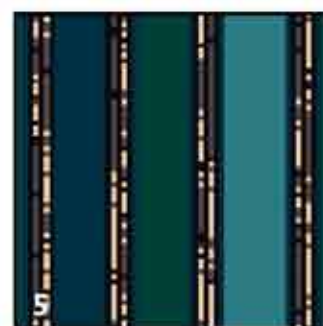
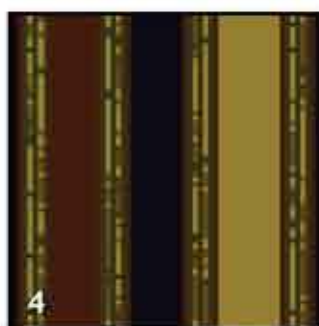
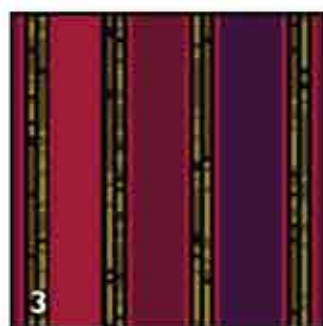
liquorice



liquorice

42.3cm (16.67"")
straight match repeat

- | | |
|-------------|--------------|
| 1. Amethyst | 001/M175379F |
| 2. Black | 002/M175379F |
| 3. Claret | 003/M175379F |
| 4. Mocha | 004/M175379F |
| 5. Viridian | 005/M175379F |
| 6. Rust | 006/M175379F |
| 7. Sand | 007/M175379F |
| 8. Petrol | 008/M175379F |

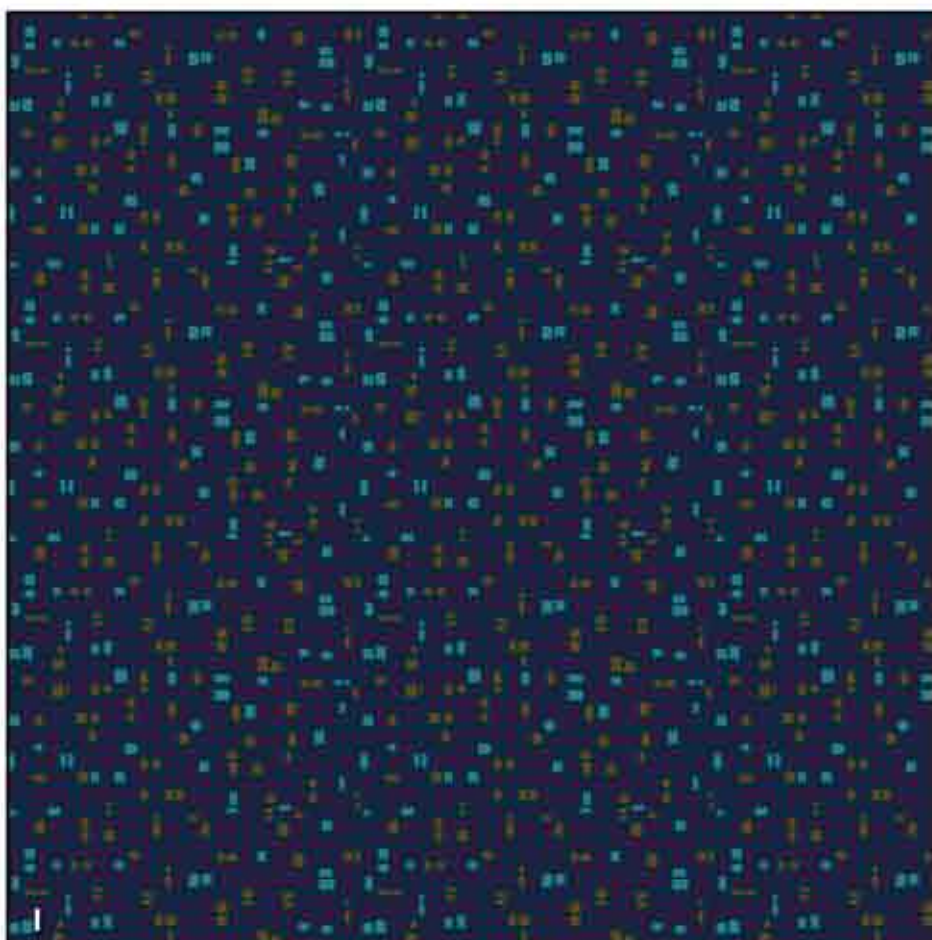


liquorice

infinity 



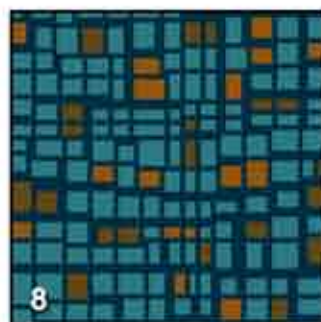
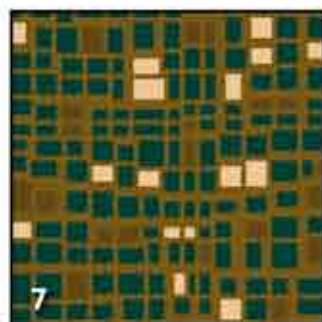
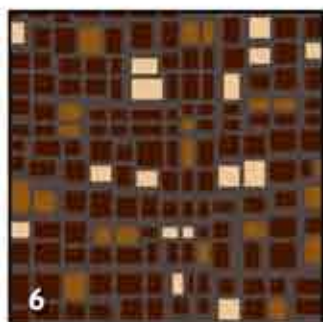
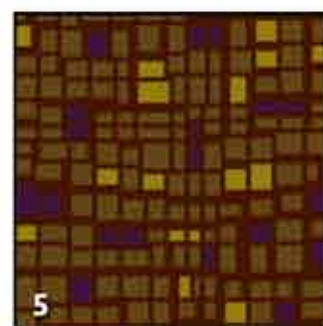
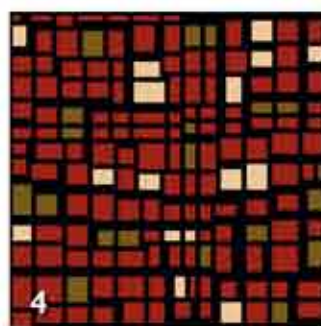
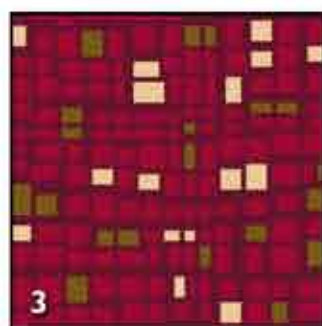
mosaic



mosaic

38.8cm (15.29")
straight match repeat

1. Amethyst 001/M157577F
2. Sand 002/M157577F
3. Crimson 003/M157577F
4. Rust 004/M157577F
5. Driftwood 005/M157577F
6. Mocha 006/M157577F
7. Viridian 007/M157577F
8. Petrol 008/M157577F



mosaic

infinity ∞



noisette

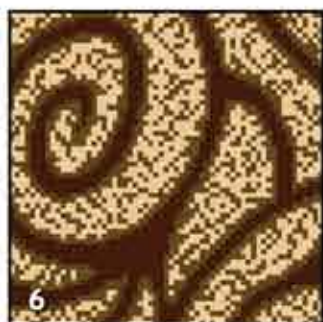


noisette

66.7cm (26.25")

straight match repeat

- | | |
|-------------|--------------|
| 1. Petrol | 001/M163478F |
| 2. Sage | 002/M163478F |
| 3. Peacock | 003/M163478F |
| 4. Black | 004/M163478F |
| 5. Amethyst | 005/M163478F |
| 6. Mocha | 006/M163478F |
| 7. Rust | 007/M163478F |
| 8. Viridian | 008/M163478F |



noisette

infinity ∞



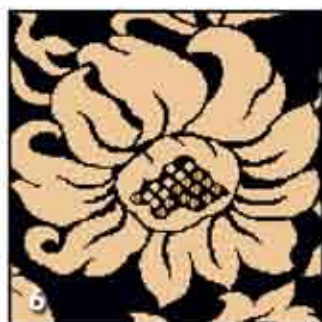
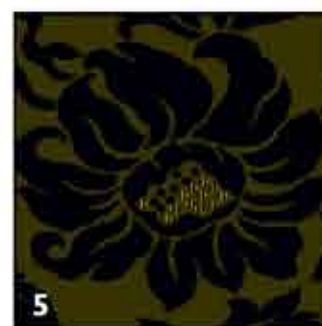
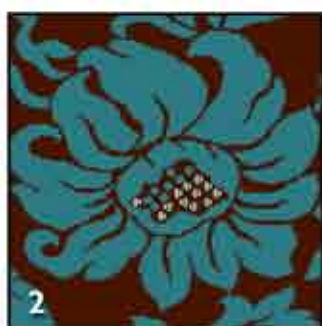
peony



peony

152cm (59.86")
straight match repeat

- | | |
|--------------|--------------|
| 1. Amethyst | 001/M029677F |
| 2. Mocha | 002/M029677F |
| 3. Driftwood | 003/M029677F |
| 4. Claret | 004/M029677F |
| 5. Sage | 005/M029677F |
| 6. Black | 006/M029677F |
| 7. Petrol | 007/M029677F |
| 8. Viridian | 008/M029677F |



peony

infinity ∞



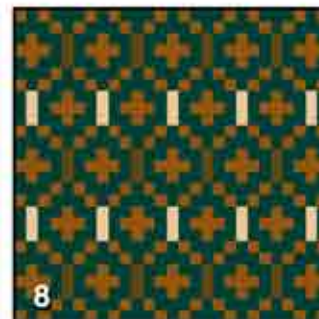
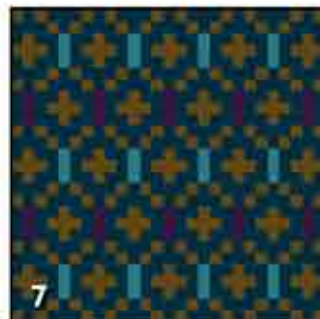
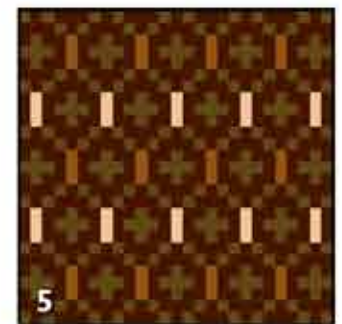
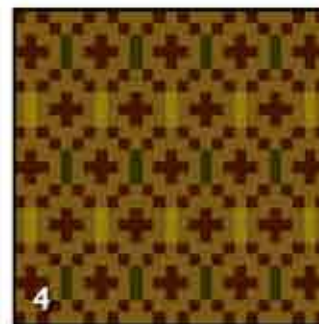
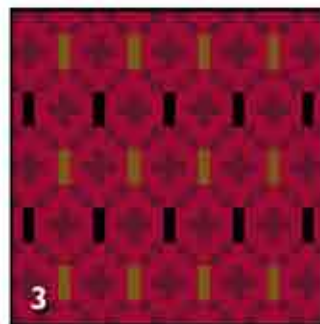
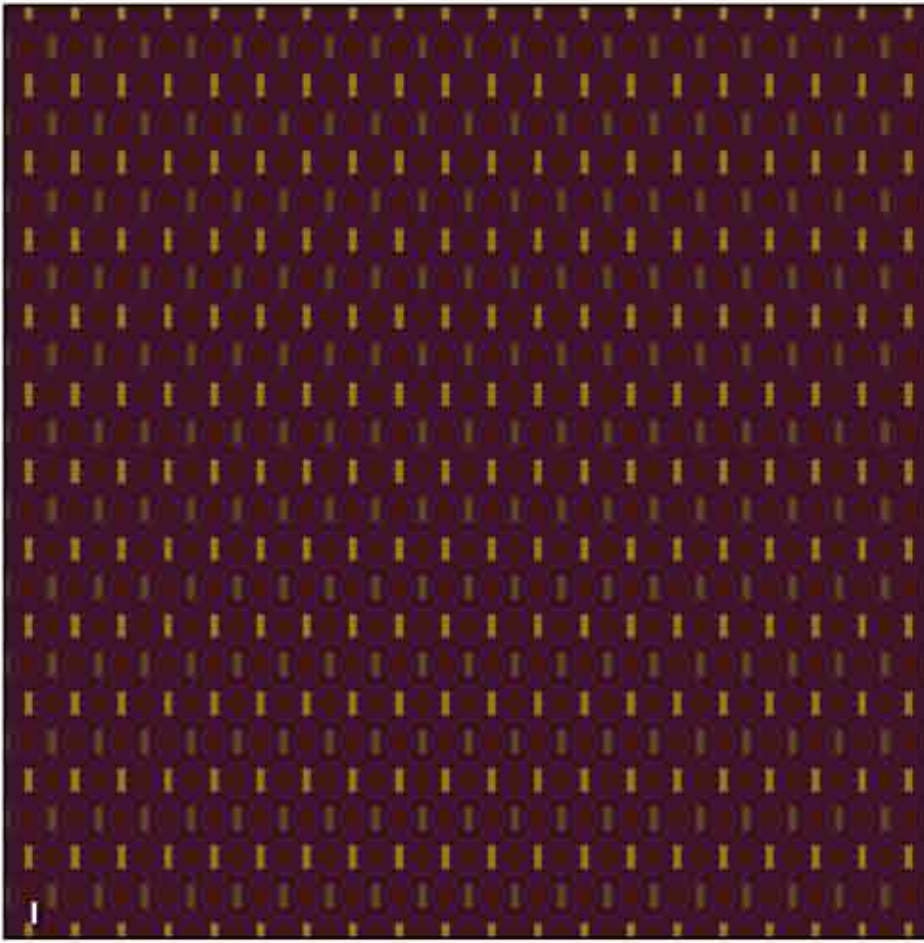
purl

purl

7.3cm (2.86")

straight match repeat

- | | |
|-------------|--------------|
| 1. Amethyst | 001/M026677F |
| 2. Black | 002/M026677F |
| 3. Crimson | 003/M026677F |
| 4. Hemp | 004/M026677F |
| 5. Mocha | 005/M026677F |
| 6. Sand | 006/M026677F |
| 7. Peacock | 007/M026677F |
| 8. Viridian | 008/M026677F |

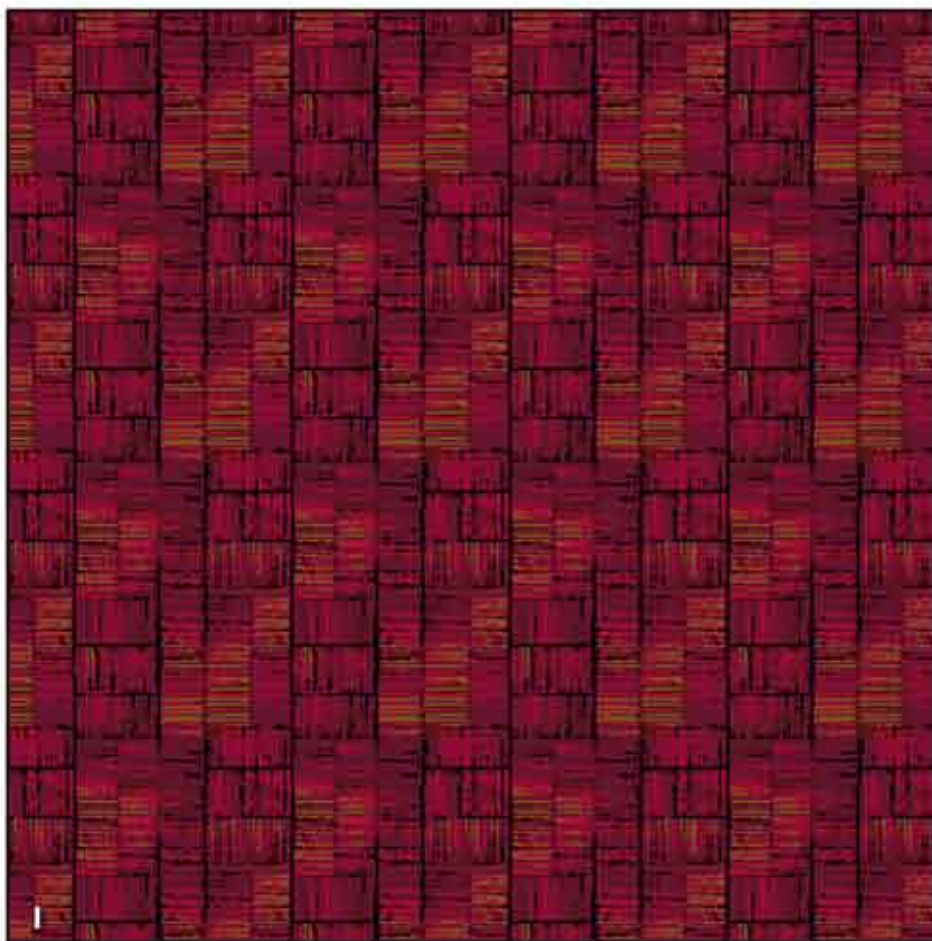


purl

infinity 



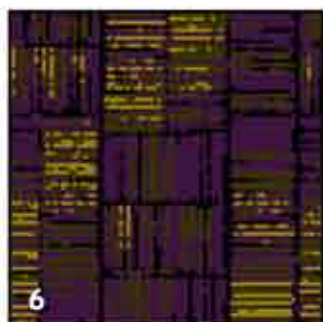
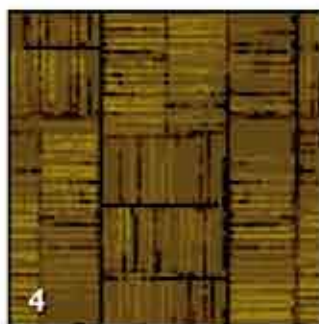
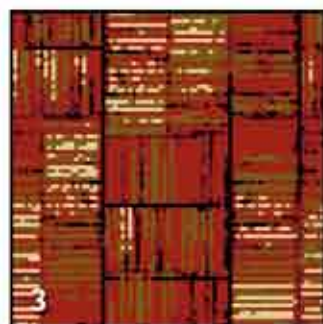
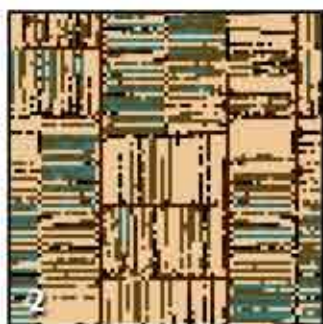
raffia



raffia

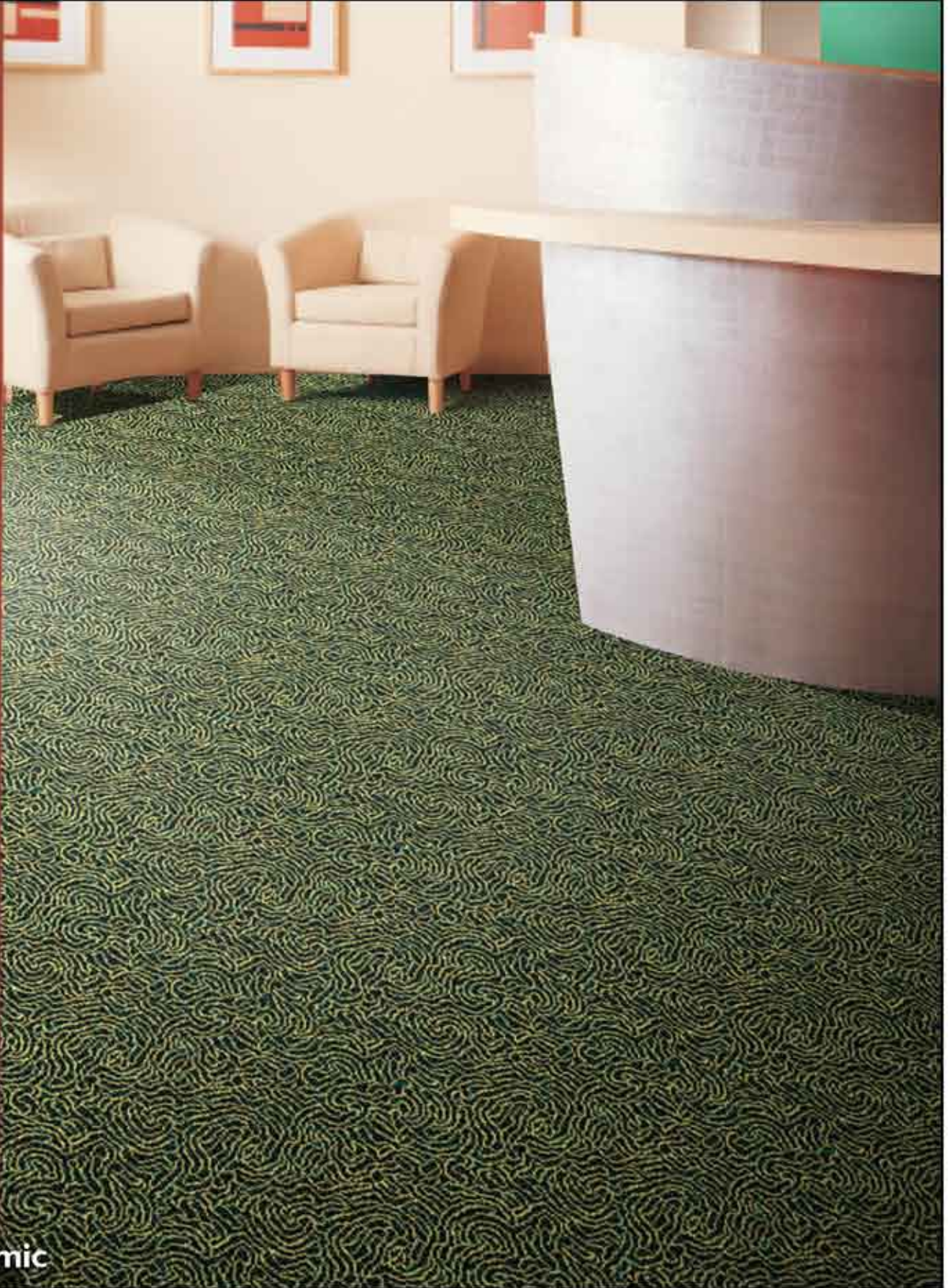
30.5cm (12")
straight match repeat

- | | |
|--------------|--------------|
| 1. Claret | 001/M168279F |
| 2. Sand | 002/M168279F |
| 3. Rust | 003/M168279F |
| 4. Driftwood | 004/M168279F |
| 5. Black | 005/M168279F |
| 6. Amethyst | 006/M168279F |
| 7. Viridian | 007/M168279F |
| 8. Peacock | 008/M168279F |



raffia

infinity 



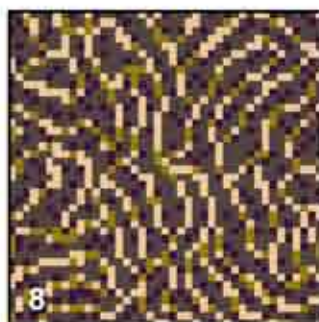
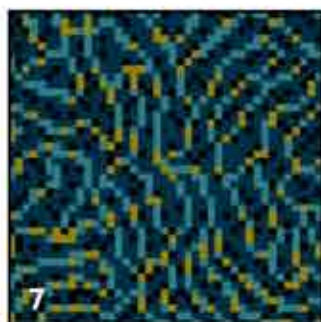
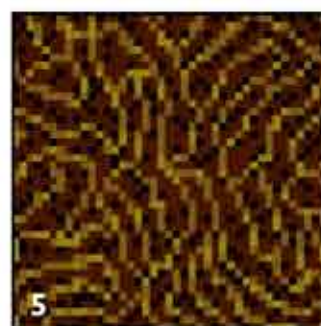
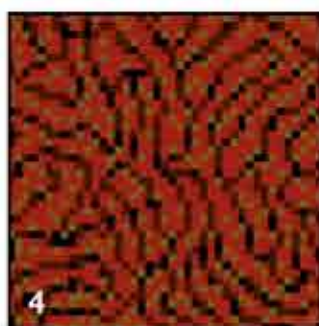
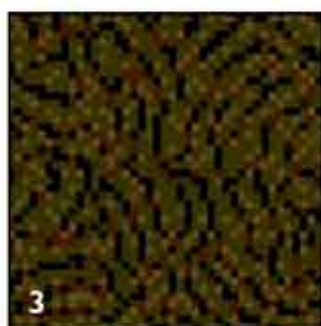
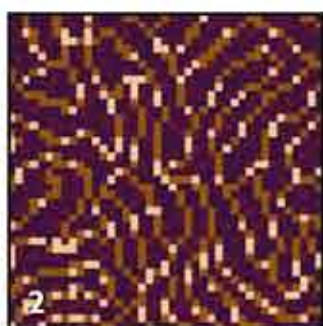
seismic



seismic

59.5cm (23.43")
straight match repeat

- | | |
|-------------|--------------|
| 1. Black | 001/M174977F |
| 2. Amethyst | 002/M174977F |
| 3. Sage | 003/M174977F |
| 4. Rust | 004/M174977F |
| 5. Mocha | 005/M174977F |
| 6. Sand | 006/M174977F |
| 7. Peacock | 007/M174977F |
| 8. Grey | 008/M174977F |

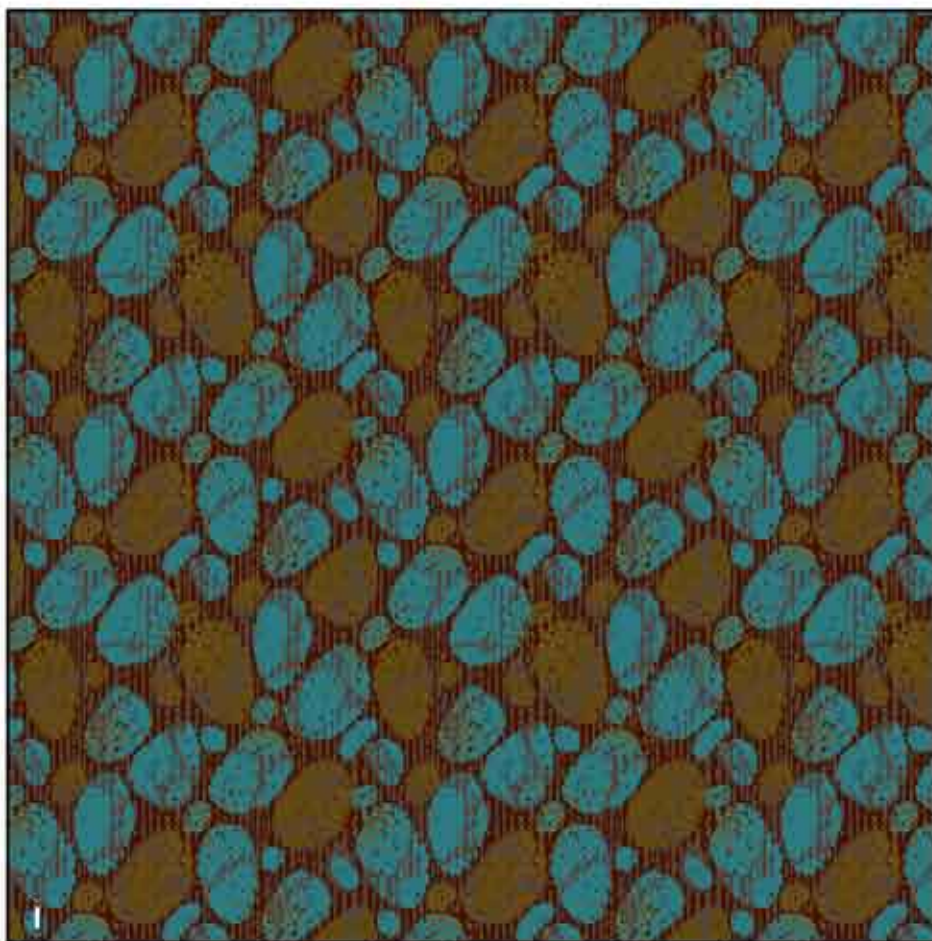


seismic

infinity ∞



shoreline

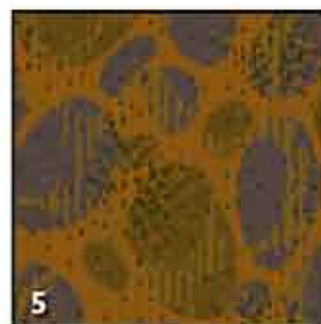


shoreline

45.7cm (18")

straight match repeat

- | | |
|--------------|--------------|
| 1. Petrol | 001/M168878F |
| 2. Sand | 002/M168878F |
| 3. Hemp | 003/M168878F |
| 4. Claret | 004/M168878F |
| 5. Grey | 005/M168878F |
| 6. Amethyst | 006/M168878F |
| 7. Viridian | 007/M168878F |
| 8. Driftwood | 008/M168878F |

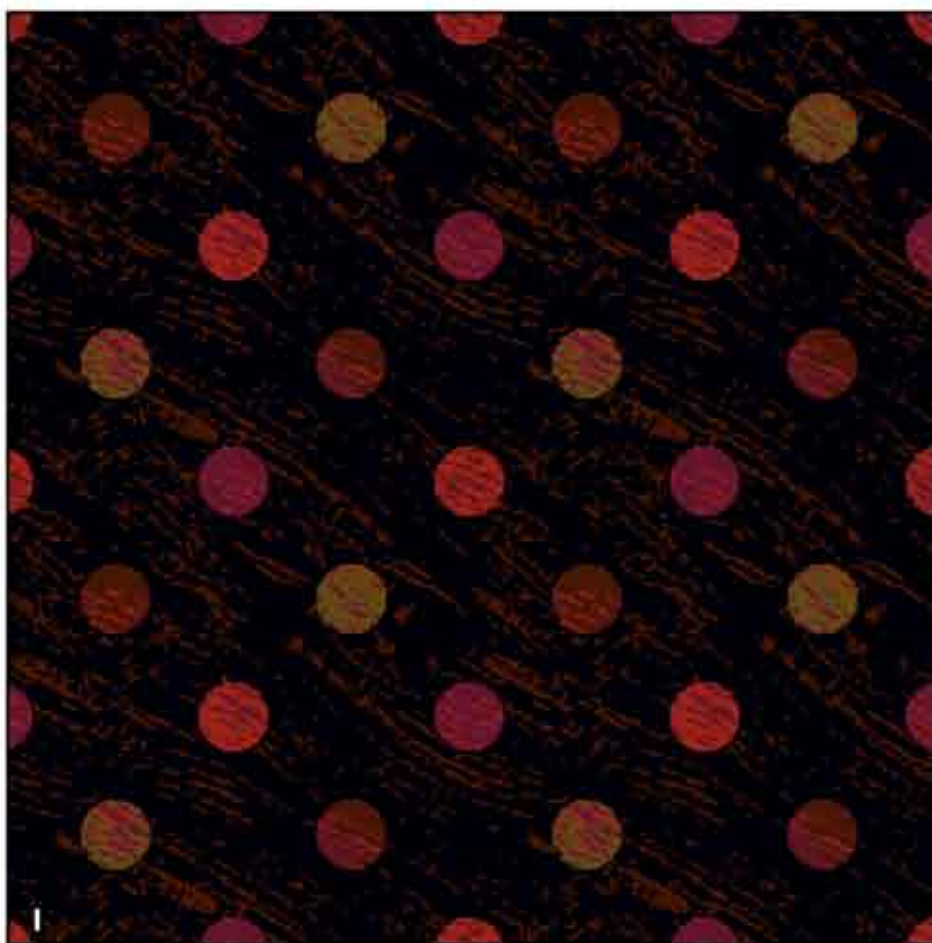


shoreline

infinity 



solar

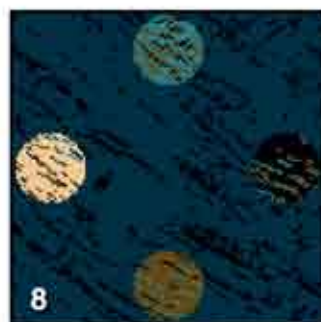
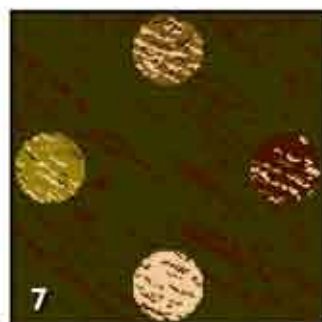
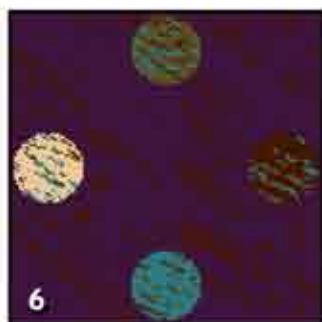
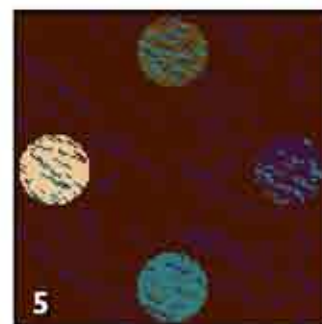
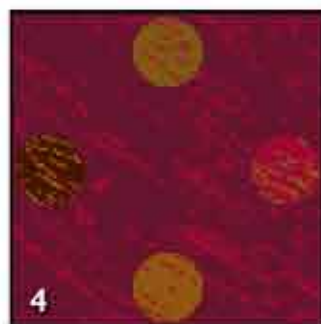
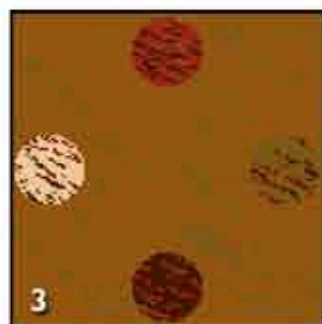
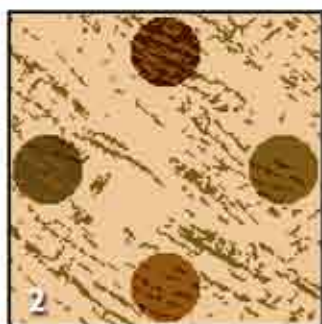


solar

66.8cm (26.29")

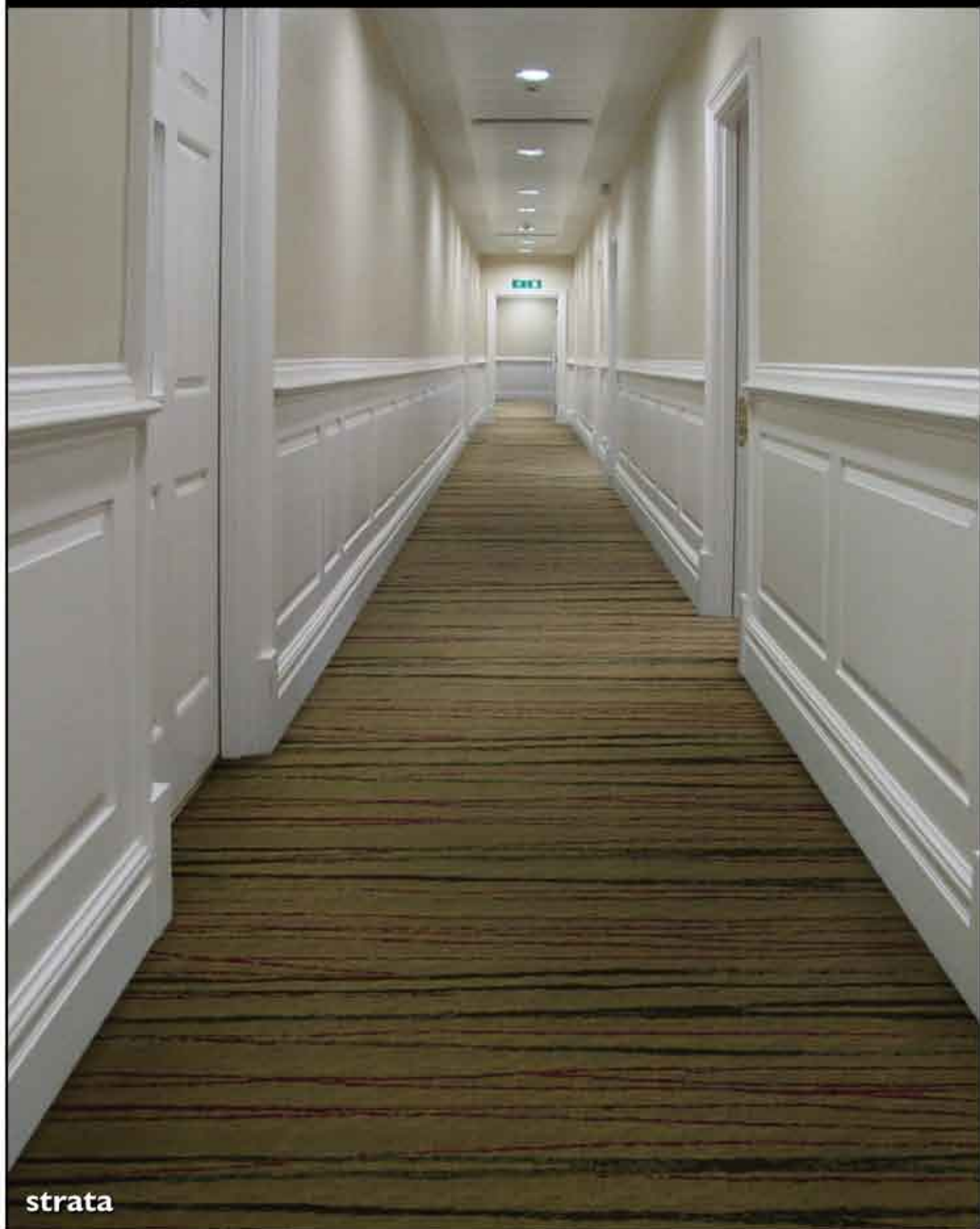
straight match repeat

- | | |
|-------------|--------------|
| 1. Black | 001/M168977F |
| 2. Sand | 002/M168977F |
| 3. Nutmeg | 003/M168977F |
| 4. Claret | 004/M168977F |
| 5. Mocha | 005/M168977F |
| 6. Amethyst | 006/M168977F |
| 7. Sage | 007/M168977F |
| 8. Peacock | 008/M168977F |



solar

infinity 



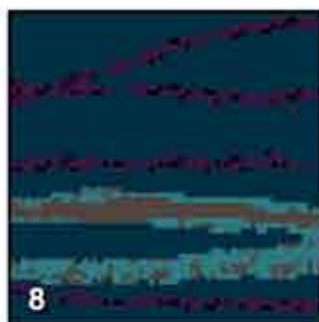
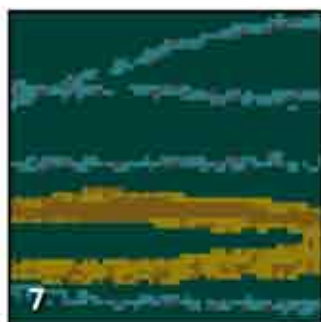
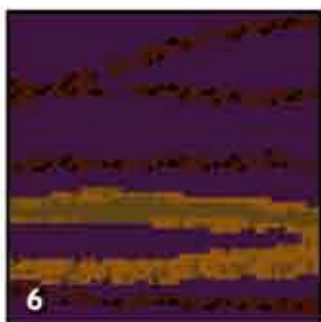
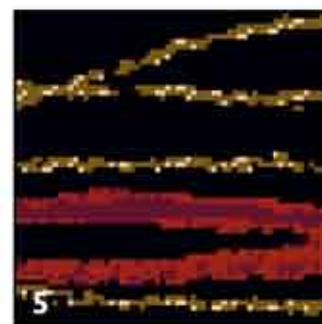
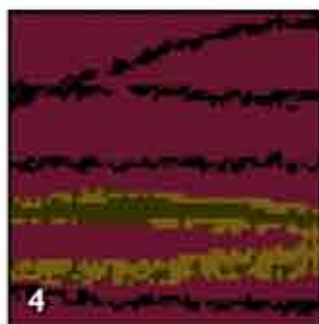
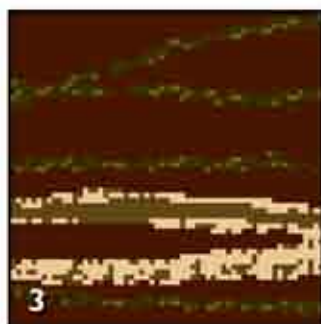
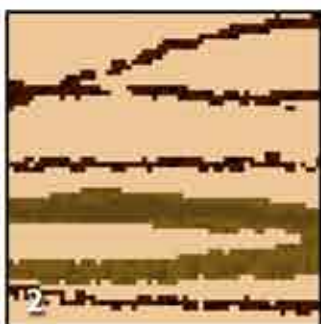
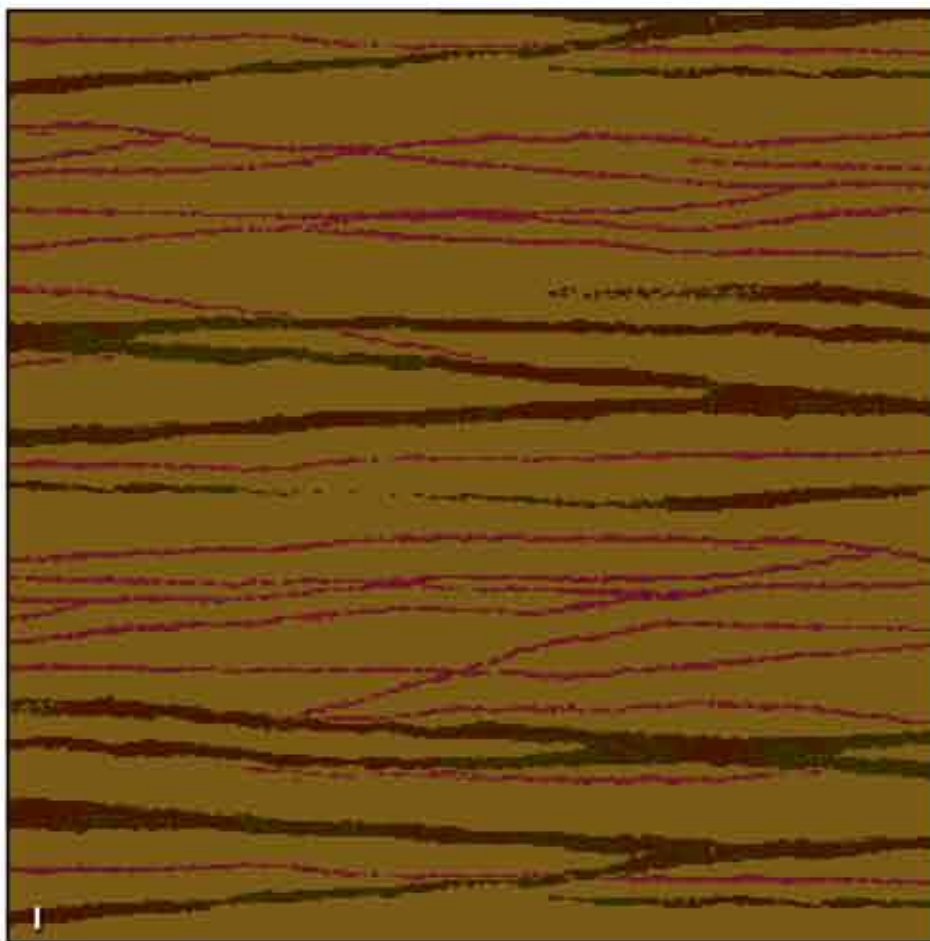
strata

strata

91.4cm (36")

straight match repeat

- | | |
|-------------|--------------|
| 1. Mocha | 001/M168179F |
| 2. Sand | 002/M168179F |
| 3. Hemp | 003/M168179F |
| 4. Claret | 004/M168179F |
| 5. Black | 005/M168179F |
| 6. Amethyst | 006/M168179F |
| 7. Viridian | 007/M168179F |
| 8. Peacock | 008/M168179F |



strata

infinity 

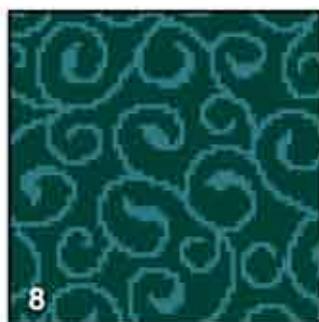


vine

vine

50.8cm (20")
straight match repeat

- | | |
|--------------|-----------|
| 1. Peacock | 109/G5586 |
| 2. Sand II | 108/G5586 |
| 3. Crimson | 001/G5586 |
| 4. Black | 018/G5586 |
| 5. Amethyst | 107/G5586 |
| 6. Driftwood | 105/G5586 |
| 7. Mocha | 104/G5586 |
| 8. Viridian | 106/G5586 |



vine

The Infinity Collection - Standard Palette vol II

Quality	Pitch (per inch)	Row (per inch)	Pile Weight (g/msq)	Width (m)	Suitability
Windermere	7	6	952	4	General Contract
Derwent	7	7	1113	4	Heavy Contract
Grassmere	7	8	1270	4	Extra Heavy Contract
Coniston	7	9	1428	4	Extra Heavy Contract
Ullswater ^(spike resist)	7	10	1589	4	Extra Heavy Contract

quality selection

The qualities detailed in the matrix above represent specifications which should satisfy most commercial requirements. With each particular installation, the decision on which quality is most appropriate will depend on the levels of traffic and the length of time the carpet is expected to be installed.

Gaskell Mackay have many years of experience in these considerations and provide detailed advice on quality selection on a project by project basis. Technical specifications are available on request.

colour and design

Colour and the presence or absence of a pattern can have a significant bearing on the long term appearance retention of the carpet. As a general rule, darker red, brown and grey tones are much less sensitive in displaying soiling than the equivalent blue, green or purple shades. All light colours are dirt sensitive, while highly patterned carpets tend to hide dirt, cigarette burns and stains.

Other aspects will also influence the choice of colour. For example, the light in a building (natural or artificial) can have a dramatic effect on the apparent colour of the carpet. Therefore carpet samples should be viewed under different light sources to ascertain their apparent colours.

planning and estimation service

Using the latest Callidus planning software, Gaskell Mackay can accurately estimate carpet requirements from site plans to any scale. Accurate waste estimations can be readily calculated and adjustments made to minimise this.

One critical area of importance is seam placement. Knowledge of customer flow through the area is used to guide the fitter in the careful positioning of seams to avoid premature wear. The planning and estimation service is free.

samples

Samples of all the designs and colourways illustrated (along with many others) can be obtained and are usually available within 72 hours.

installation

The 'Infinity' range of carpet qualities which includes Windermere, Derwent and Coniston are produced on a revolutionary new, high speed axminster loom and are woven without a traditional selvedge. The selvedge is trimmed during manufacturing as close as possible to the pile. Normally this allows the carpet to be joined without necessity for further trimming of the selvedge. The uniquely formed selvedge may however be trimmed by the installer if he feels the carpet has not been trimmed sufficiently to the pile and would leave a gap after seaming. Fusible yarns are woven into the selvedge to provide extra pile anchorage.

It is essential to seal the back of the carpet before cutting, particularly on cross cuts and then seal the cut edge to prevent fraying. The carpet may be seamed with heat seaming tape or electro-seaming tape (e.g. 'Silvaseam'). The carpet may be hand sewn if this is specified for border work after the carpet has been sealed and cut.

In all other respects the carpet should be installed in accordance with BS5325 (Code of Practice for the Installation of Textile Floorcoverings) and NICF Carpet Installation Manual by a trained axminster carpet installer.

There are a number of ways in which the 'Infinity' range of Gaskell Mackay qualities can be installed including stretch fitted over a suitable contact underlay on to gripper, full adhesion to a prepared subfloor or installed on double stick underlay systems. Installation on double stick underlay systems should be in accordance with the recommendations issued by Gaskell Mackay Carpets Ltd.

maintenance

Effective dirt barrier systems must be fitted in footwells in, or immediately adjacent to external entrances. Carpet maintenance must be carefully planned and this plan implemented from the moment the carpet is installed.

Maintenance methods and levels must be tailored to foot traffic intensity to prevent both inadequate or unnecessary cleaning. A cleaning schedule usually includes three levels of cleaning.

1. Regular maintenance (Daily vacuum cleaning and spot removal).
2. Intermediate "wet" cleaning or surface brightening.
3. Deep or restorative "wet" cleaning.

Depending on how effective the regular (usual daily) maintenance is, then intermediate cleaning will have to be used eventually. Effective intermediate cleaning can often postpone the need for restorative cleaning, all of which will save maintenance costs. Correct and regular maintenance will also be cost effective by increasing the lifespan of the carpet.

The above information on installation and maintenance provides general guidelines and full details on these subjects can be obtained by contacting the Contract Sales Desk on 01429 892525 or . E-MAIL sales@gaskell.co.uk

THE
INFINITY COLLECTION
standard palette vol II



Gaskell Mackay Carpets Ltd
View Logistics, Park View Rd East,
Hartlepool, TS25 1PG
Tel: 01429 892525 Fax: 01429 892530
Email: info@gaskell.co.uk Web: www.gaskell.co.uk
Co. Reg: 5781556 VAT no: 880 321832