



HUGH MACKAY

carpets

Quality Carpets Since 1903

Prince Bishop

Made from 80% Wool



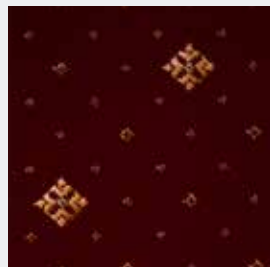
HUGH MACKAY
carpets

Prince Bishop: Crown

Choose from 60 designs



Crown Brown
Pattern Repeat:
W: 33cm x L: 33cm



Crown Burgundy
Pattern Repeat:
W: 33cm x L: 33cm



Crown Cinnamon
Pattern Repeat:
W: 33cm x L: 33cm



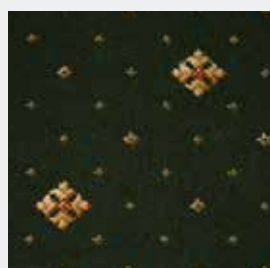
Crown Cobalt
Pattern Repeat:
W: 33cm x L: 33cm



Crown Corn
Pattern Repeat:
W: 33cm x L: 33cm



Crown Dark Gold
Pattern Repeat:
W: 33cm x L: 33cm



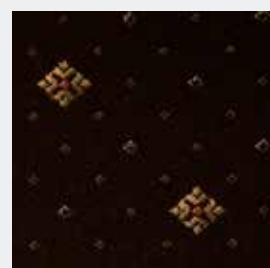
Crown Dark Green
Pattern Repeat:
W: 33cm x L: 33cm



Crown Grey
Pattern Repeat:
W: 33cm x L: 33cm



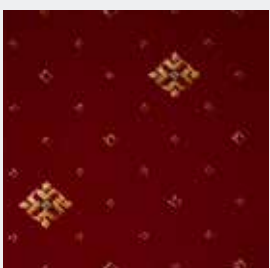
Crown Mink
Pattern Repeat:
W: 33cm x L: 33cm



Crown Mocha
Pattern Repeat:
W: 33cm x L: 33cm



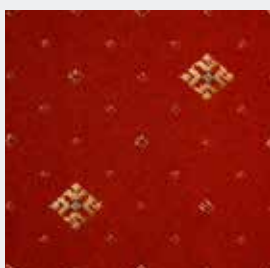
Crown Navy
Pattern Repeat:
W: 33cm x L: 33cm



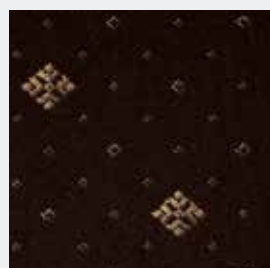
Crown Red
Pattern Repeat:
W: 33cm x L: 33cm



Crown Steel
Pattern Repeat:
W: 33cm x L: 33cm



Crown Terracotta
Pattern Repeat:
W: 33cm x L: 33cm



Crown Umber
Pattern Repeat:
W: 33cm x L: 33cm



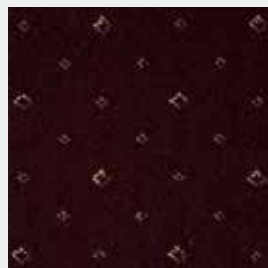
Crown Willow
Pattern Repeat:
W: 33cm x L: 33cm

Prince Bishop: Sceptre

Choose from 60 designs



Sceptre Anthracite
Pattern Repeat:
W: 16.7cm x L: 16.7cm



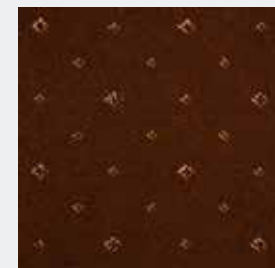
Sceptre Aphrodite
Pattern Repeat:
W: 16.7cm x L: 16.7cm



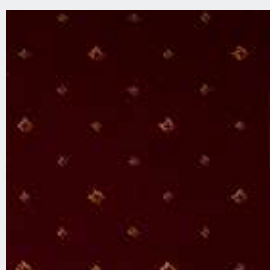
Sceptre Beige
Pattern Repeat:
W: 16.7cm x L: 16.7cm



Sceptre Black
Pattern Repeat:
W: 16.7cm x L: 16.7cm



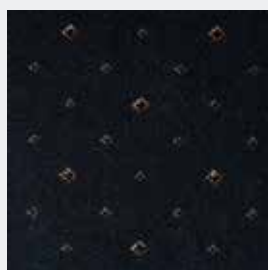
Sceptre Brown
Pattern Repeat:
W: 16.7cm x L: 16.7cm



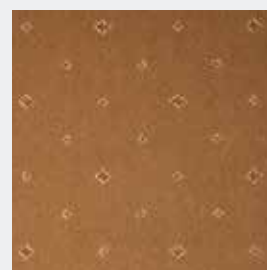
Sceptre Burgundy
Pattern Repeat:
W: 16.7cm x L: 16.7cm



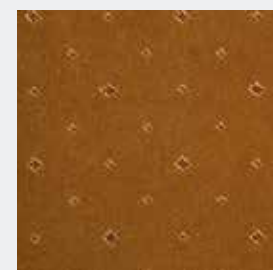
Sceptre Cinnamon
Pattern Repeat:
W: 16.7cm x L: 16.7cm



Sceptre Cobalt
Pattern Repeat:
W: 16.7cm x L: 16.7cm



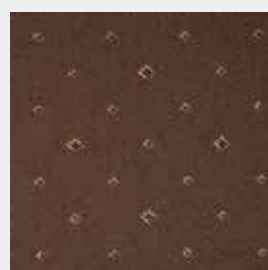
Sceptre Corn
Pattern Repeat:
W: 16.7cm x L: 16.7cm



Sceptre Dark Gold
Pattern Repeat:
W: 16.7cm x L: 16.7cm



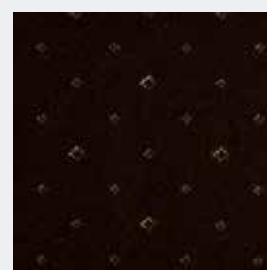
Sceptre Dark Green
Pattern Repeat:
W: 16.7cm x L: 16.7cm



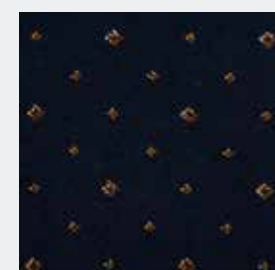
Sceptre Grey
Pattern Repeat:
W: 16.7cm x L: 16.7cm



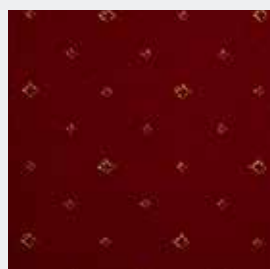
Sceptre Mink
Pattern Repeat:
W: 16.7cm x L: 16.7cm



Sceptre Mocha
Pattern Repeat:
W: 16.7cm x L: 16.7cm



Sceptre Navy
Pattern Repeat:
W: 16.7cm x L: 16.7cm



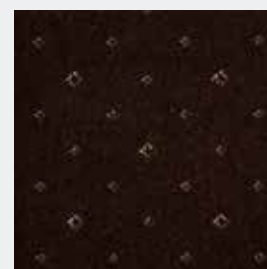
Sceptre Red
Pattern Repeat:
W: 16.7cm x L: 16.7cm



Sceptre Steel
Pattern Repeat:
W: 16.7cm x L: 16.7cm



Sceptre Terracotta
Pattern Repeat:
W: 16.7cm x L: 16.7cm



Sceptre Umber
Pattern Repeat:
W: 16.7cm x L: 16.7cm



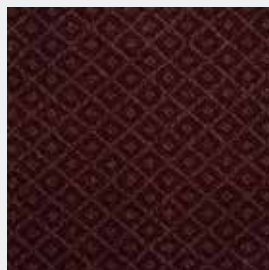
Sceptre Willow
Pattern Repeat:
W: 16.7cm x L: 16.7cm

Prince Bishop: Trellis

Choose from 60 designs



Trellis Anthracite
Pattern Repeat:
W: 9cm x L: 7.5cm



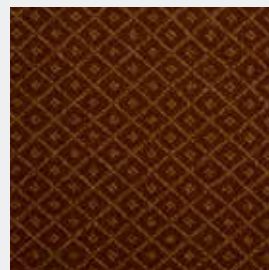
Trellis Aphrodite
Pattern Repeat:
W: 9cm x L: 7.5cm



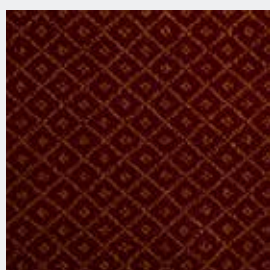
Trellis Beige
Pattern Repeat:
W: 9cm x L: 7.5cm



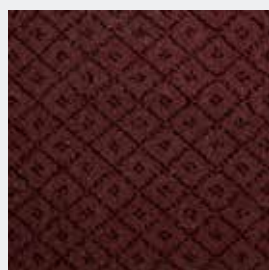
Trellis Black
Pattern Repeat:
W: 9cm x L: 7.5cm



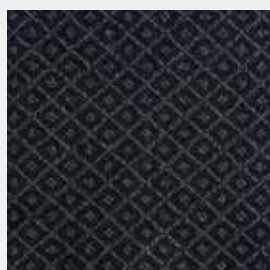
Trellis Brown
Pattern Repeat:
W: 9cm x L: 7.5cm



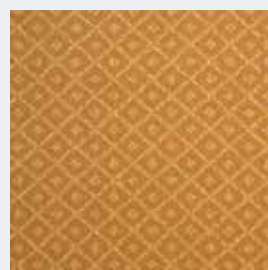
Trellis Burgundy
Pattern Repeat:
W: 9cm x L: 7.5cm



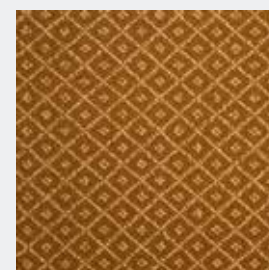
Trellis Cinnamon
Pattern Repeat:
W: 9cm x L: 7.5cm



Trellis Cobalt
Pattern Repeat:
W: 9cm x L: 7.5cm



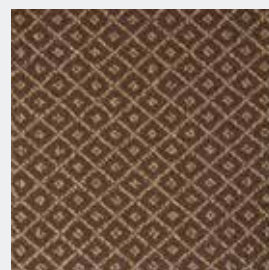
Trellis Corn
Pattern Repeat:
W: 9cm x L: 7.5cm



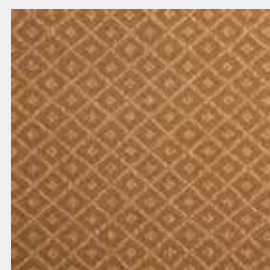
Trellis Dark Gold
Pattern Repeat:
W: 9cm x L: 7.5cm



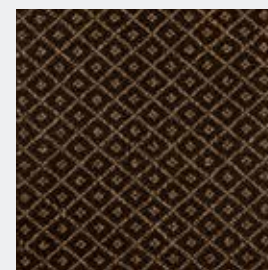
Trellis Dark Green
Pattern Repeat:
W: 9cm x L: 7.5cm



Trellis Grey
Pattern Repeat:
W: 9cm x L: 7.5cm



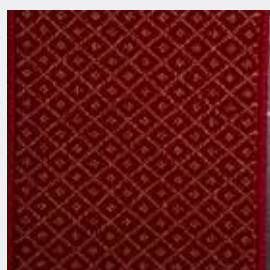
Trellis Mink
Pattern Repeat:
W: 9cm x L: 7.5cm



Trellis Mocha
Pattern Repeat:
W: 9cm x L: 7.5cm



Trellis Navy
Pattern Repeat:
W: 9cm x L: 7.5cm



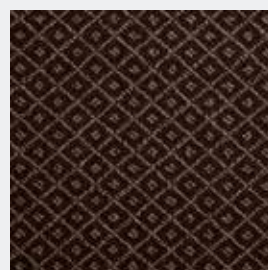
Trellis Red
Pattern Repeat:
W: 9cm x L: 7.5cm



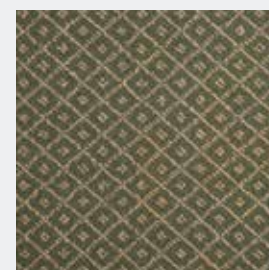
Trellis Steel
Pattern Repeat:
W: 9cm x L: 7.5cm



Trellis Terracotta
Pattern Repeat:
W: 9cm x L: 7.5cm



Trellis Umber
Pattern Repeat:
W: 9cm x L: 7.5cm



Trellis Willow
Pattern Repeat:
W: 9cm x L: 7.5cm

Prince Bishop

Specification Details

Specification	
Construction:	Woven Axminster
Texture:	Cut Pile Velour
Pitch:	7 per inch/27.6 per dcm
Rows:	8 per inch/31.5 per dcm
Pile Weight:	1150g/m2
Total Weight:	1920g/m2
Tuft Density per m2:	86,940
Backing:	Woven Polyester/Polypropylene
Pile Yarn Content:	80% Wool, 20% Nylon
Pile Height:	7mm
Yarn count & tex	2 Ply/47's, R660 tex
Width:	4m

Tested for	
<u>Suitability</u> Heavy Domestic/Heavy Commercial	Class 33 BS EN 1307:2005
<u>Flammability</u> Fire behaviour : CFL Smoke production : S1 Low radius of char	(in accordance with clause 11 of EN 13501-1:2002) (BS4790 BS5287)
<u>Castor Chair</u> Not recommended unless protecting mat is present.	
<u>Suitability for Stairs:</u> Yes (For maximum performance we recommend the use of an approved stair nosing and the movement of carpet every 6 months from tread to rise)	(in accordance with BS EN1307)

Features
Available in 4m broadloom only. Regular Nationwide delivery service Fashionable colours to meet a wide variety of interior styles. Ease of maintenance. Made in: EU Available from stock.

General Information
Pile reversal: All cut pile carpets can suffer from pile reversal and in certain instances this may become permanently bent or distorted for no specific reason that research has yet identified, giving areas of light and shade. This is also known as "shading" or "watermarking". It is not a defect in manufacture, it only occurs in a small percentage of all carpets and no liability whatsoever can be accepted by the manufacturer in respect of it.
Pile pressure: All cut pile carpets are liable to show light and dark patches resulting from disturbance of the pile created by foot traffic or brushing, This is a normal feature and is not a defect in manufacture and no liability whatsoever can be accepted by the manufacturer in respect of it.
Pale shades: We include within our collection a number of pale shades. Primarily these are used as top or highlight colours. These more delicate shades will invariably tend to soil more quickly and give a lower of light fastness than the norm, and may show natural blemishes within the fibre that tend to be masked in deeper shades containing a greater quantity of dyestuff.

Maintenance
Hugh Mackay recommend that this carpet is maintained in accordance with an agreed maintenance schedule which should include the following: i). Vacuum regularly. ii). Remove spills immediately. iii). Professionally clean as required.

Installation
To be installed in accordance with BS5325 "Code of Practice for the Installation of Floor Coverings" and NICF manual. For quantity orders requiring colour matching, please state at the time of ordering. All samples may not be from the same production batch as current stock and therefore should be used as a guide and not as an exact match. Colour variations: There may be colour variations/shade variations between each batch of carpet as well as with undyed materials. Undyed Wool: Due to the inherent natural variations in undyed wool and the current blending techniques, there may be noticeable shade variations between the colours used in the same material and the actual production. Pattern match cannot be guaranteed with any tufted patterned carpet.

Hugh Mackay Carpets
Part of The Mackay Group
T: 01429 892555
E: sales@hughmackay.co.uk
W: www.hughmackay.co.uk



HUGH MACKAY
carpets