



Q floors

part of The Mackay Group

Where *Quality & Durability* become *Reality*

Sovereign

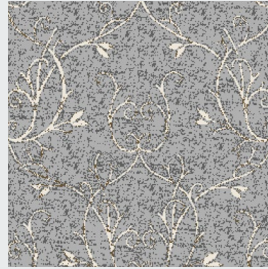
Choose from 15 contemporary designs



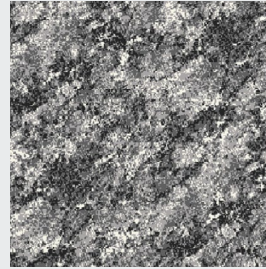
Botanic Beige



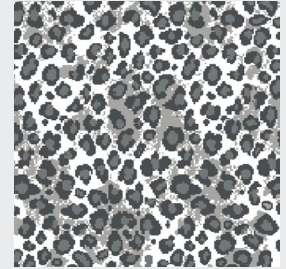
Botanic Grey



Botanic Silver



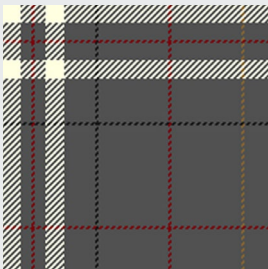
Culumus 01



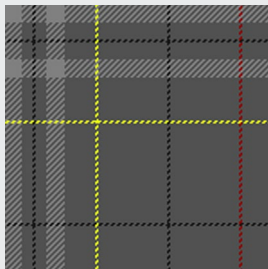
Ice Leopard



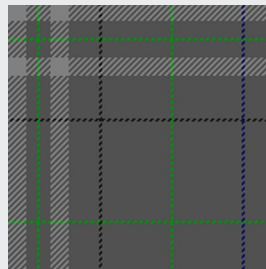
Plaid 01



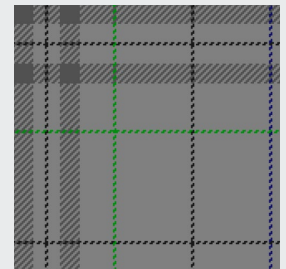
Plaid 02



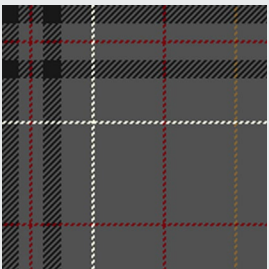
Plaid 04



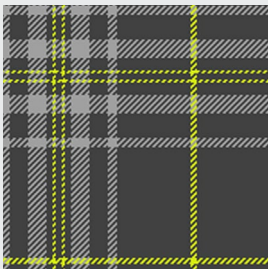
Plaid 06



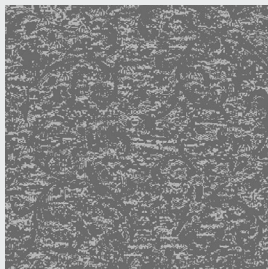
Plaid 05



Plaid 07



Plaid 08



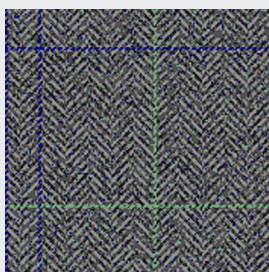
Tones 01



Tones 03



Tones 07



Tweed 11

Qfloors

Part of The Mackay Group

T: 01429 892555

E: sales@hughmackay.co.uk

W: www.hughmackay.co.uk


part of The Mackay Group

Sovereign

Specification Details

Specification		
Pile Weight:	1630gr/m2	
Pile Content:	100% Stainsafe Polypropylene	
Total Weight:		
Width:	4m	
Backing:	Woven	
Wear Layer:		
Total Thickness:		
Origin:	UK	TOG: 1.6
Suitability:	Heavy Domestic/Medium Commercial.	
Wear Warranty:	10yrs	

Installation		
To be installed in accordance with BS5325 "Code of Practice for the Installation of Floor Coverings" and NICF manual.		
For quantity orders requiring colour matching, please state at the time of ordering.		
All samples may not be from the same production batch as current stock and therefore should be used as a guide and not as an exact match.		
Colour variations: There may be colour variations/shade variations between each batch of carpet as well as with undyed materials.		
Undyed Wool: Due to the inherent natural variations in undyed wool and the current blending techniques, there may be noticeable shade variations between the colours used in the same material and the actual production. Pattern match cannot be guaranteed with any tufted patterned carpet.		

Features
Regular Nationwide delivery service Fashionable colours to meet a wide variety of interior styles. Ease of maintenance. Made in: UK. All colours available from stock for immediate call off.

General Information
<p>Pile reversal: All cut pile carpets can suffer from pile reversal and in certain instances this may become permanently bent or distorted for no specific reason that research has yet identified, giving areas of light and shade. This is also known as "shading" or "watermarking". It is not a defect in manufacture, it only occurs in a small percentage of all carpets and no liability whatsoever can be accepted by the manufacturer in respect of it.</p> <p>Pile pressure: All cut pile carpets are liable to show light and dark patches resulting from disturbance of the pile created by foot traffic or brushing, This is a normal feature and is not a defect in manufacture and no liability whatsoever can be accepted by the manufacturer in respect of it.</p> <p>Pale shades: We include within our collection a number of pale shades. Primarily these are used as top or highlight colours. These more delicate shades will invariably tend to soil more quickly and give a lower of light fastness than the norm, and may show natural blemishes within the fibre that tend to be masked in deeper shades containing a greater quantity of dyestuff.</p>

Maintenance
Qfloors recommend that this carpet is maintained in accordance with an agreed maintenance schedule which should include the following: i). Vacuum regularly. ii). Remove spills immediately. iii). Professionally clean as required.

Qfloors
Part of The Mackay Group
T: 01429 892555
E: sales@hughmackay.co.uk
W: www.hughmackay.co.uk

